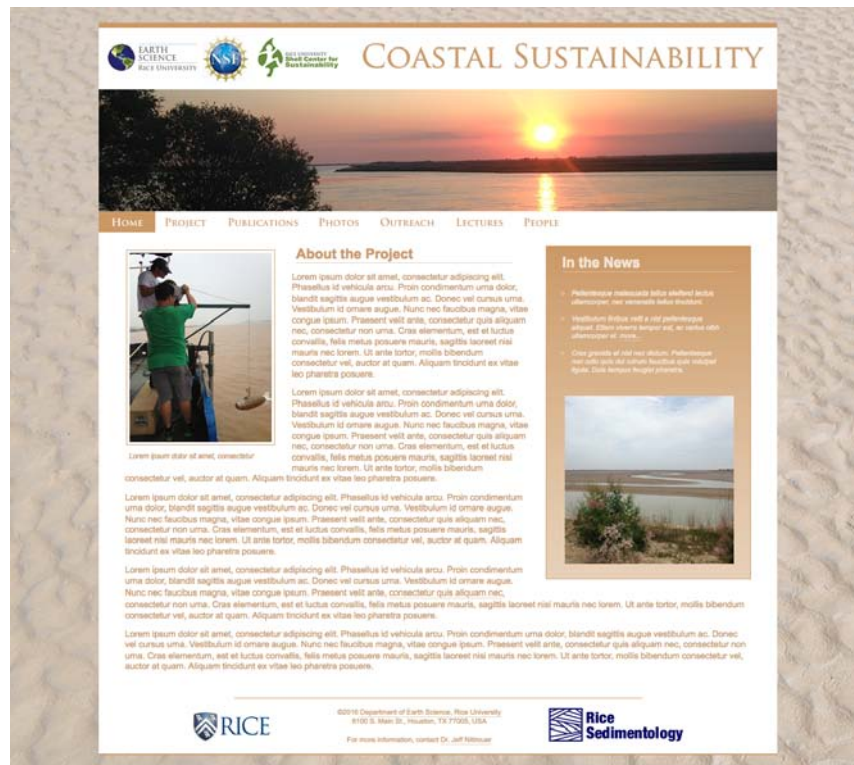


## Portfolio – Rice Earth Science Project & Research Group web sites



### Coastal Sustainability Project:

This fully marked-up site was requested by a Rice professor leading an interdisciplinary, long-term study on the dynamics of human interaction with the world's coastal areas.

- Personal involvement: Design: 100% (with input from group); Comps: 100%; Markup: 100% (images provided by group)
- Standards compliance: html5
- Tools used: html5, CSS3, Adobe Dreamweaver, Adobe Fireworks
- Total pages: 7 (including index)
- Current status: Archived



### Rice Sedimentology (Research Group):

A fully marked-up site commissioned by an Earth Science professor heading a lab group specializing in sedimentology studies.

- Personal involvement: Design: 100% (with input from group); Comps: 100%; Markup: 100% (images provided by group)
- Standards compliance: html5
- Tools used: html5, CSS3, Adobe Dreamweaver, Adobe Fireworks
- Total pages: 8 (including index)
- Current status: Archived





## Portfolio – Rice Earth Science Project & Research Group web sites (con't.)



### iMUSH (Imaging Magma Under Mount St. Helens) Project:

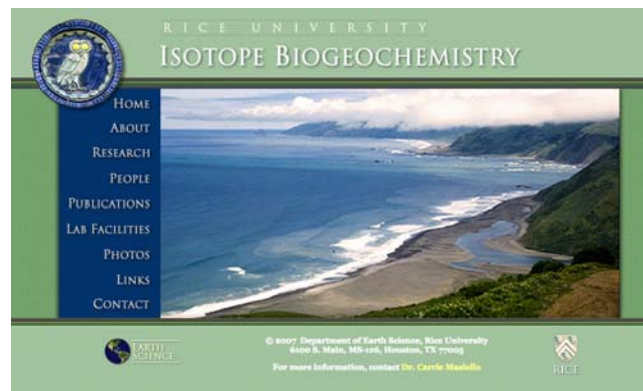
By request of a Rice professor involved in this project, the landing page for the project's volunteer application was created.

- Personal involvement: Design: 100%; Comps: 100%; Markup: 100% (some images provided by professor)
- Standards compliance: html5
- Tools used: html5, CSS, Adobe Dreamweaver, Adobe Fireworks, Adobe Acrobat (application form)
- Total pages: 1 (including index)
- Current status: Archived

### Rice Isotope Biogeochemistry (Research Group):

Here is another group site; this one concentrating on isotope biogeochemistry research.

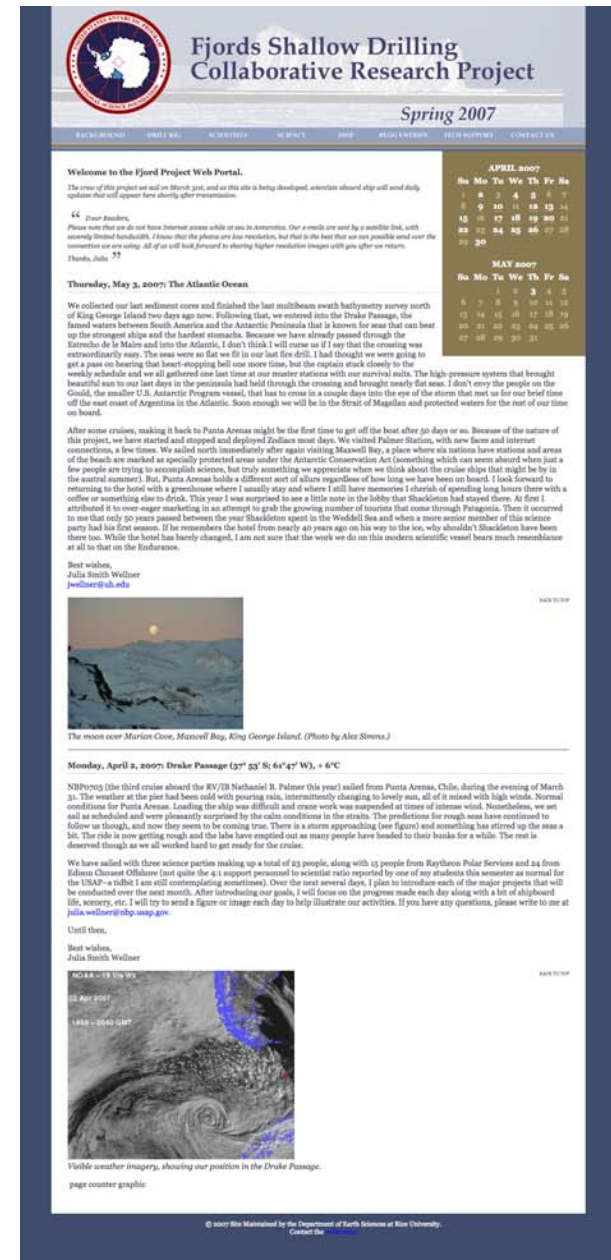
- Personal involvement: Design: 100%; Comps: 100%; Markup: 100% (images provided by faculty member)
- Standards compliance: xhtml 1.0
- Tools used: xhtml 1.0, CSS, Adobe Dreamweaver, Adobe Fireworks
- Total pages: 10 (including index)
- Current status: Archived



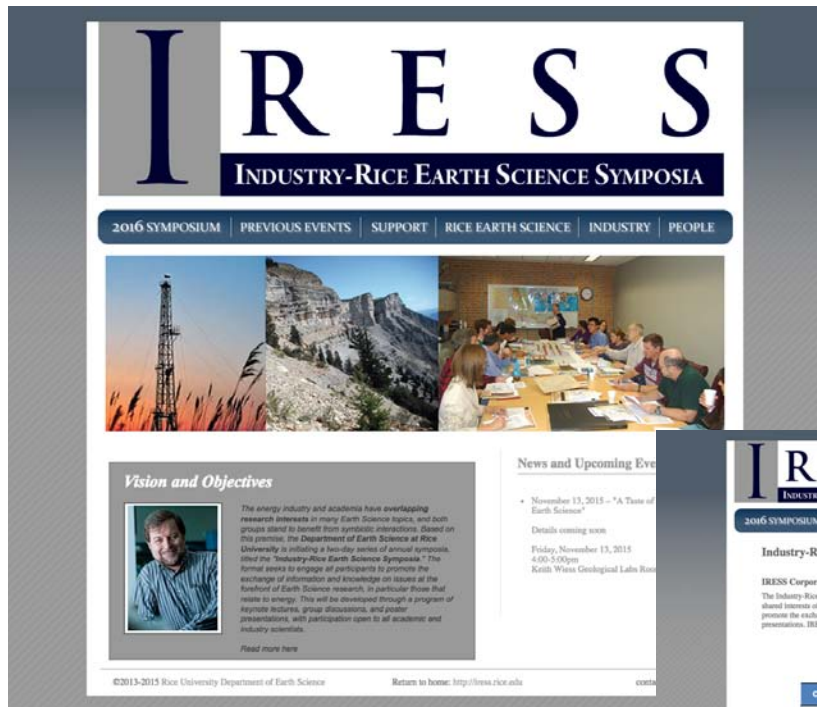
### Fjords Project:

This is a blog format site (single-page) that was commissioned by Rice faculty coordinating this Antarctic research cruise.

- Personal involvement: Design: 100%; Comps: 100%; Markup: 100% (images and content provided by researchers by satellite upload)
- Standards compliance: xhtml 1.0
- Tools used: xhtml 1.0, CSS, Adobe Dreamweaver, Adobe Fireworks
- Total pages: 1 (including index)
- Current status: archived at <http://terra.rice.edu/archive/fjords/>



## Portfolio – Rice Earth Science Symposia web site

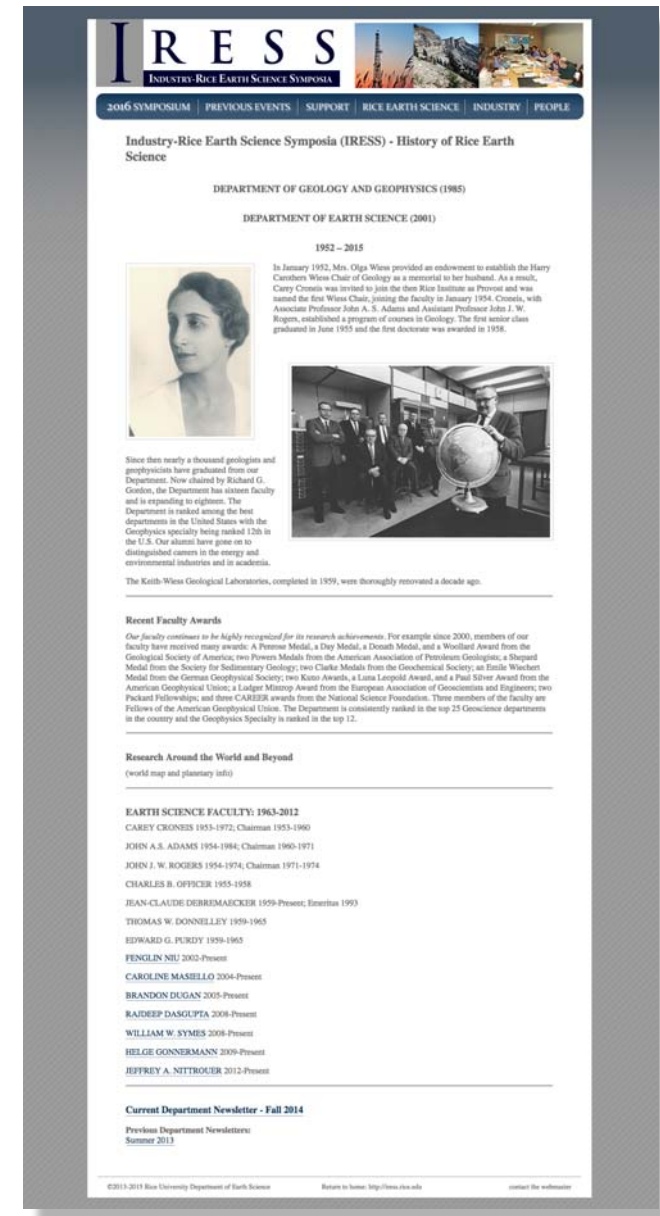
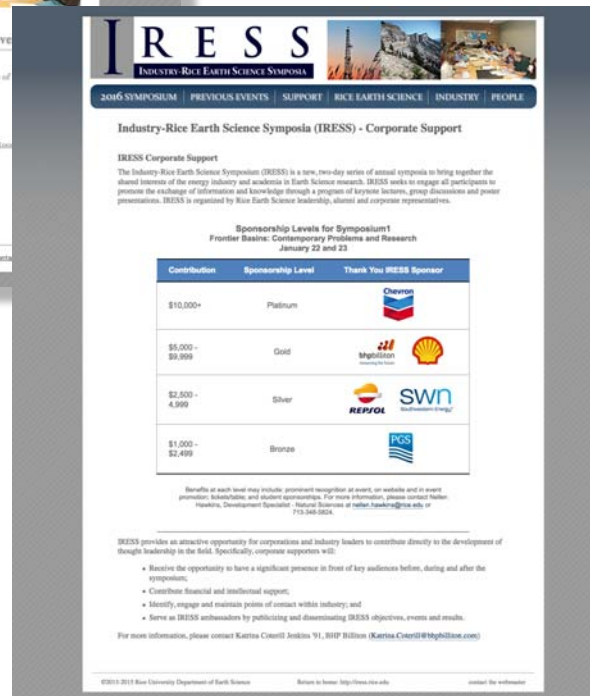


Of note:  
All drop-down navigation menus were created using CSS3 exclusively, as this allows the pages to load faster and display more reliably in browsers with scripting disabled.

### IRESS (Industry-Rice Earth Science Symposia):

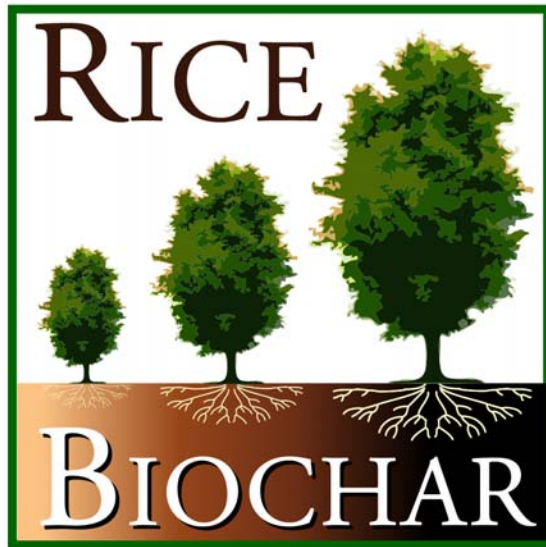
Rice's Earth Science Department initiated an ongoing series of symposia in 2014, and this web site was its first online portal. My involvement was as part of a working committee, receiving input and content from others in the planning group.

- Personal involvement: Design: 100%; Comps: 100%; Markup: 100% (logo, images, and content provided by committee)
- Standards compliance: html5
- Tools used: html5, CSS3, Adobe Dreamweaver, Adobe Fireworks
- Total pages: 35 (including index)
- Current status: archived at <http://iress.rice.edu/archive.html>





## Portfolio - Rice logos & print collateral



### Logo: Rice Biochar

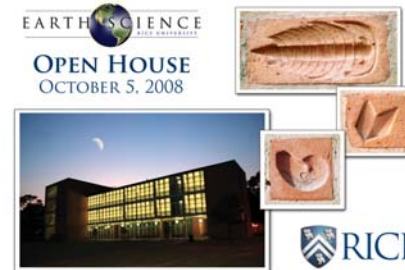
A Rice professor leading much of the university's studies in carbon sequestration commissioned this logo. I created this logo using Adobe Illustrator and Adobe Fireworks. It is still used extensively by the research group on posters and other collateral.

### Logo: Rice Sedimentology

This logo was created by request of the faculty member who heads the Rice Sedimentology Research Group. It was created using Adobe Illustrator and Adobe Fireworks.



## Print: Department of Earth Science Open Houses



Using Photoshop, Fireworks, InDesign, and Acrobat Professional, I created these postcards to announce Open Houses celebrating the completion of the department's building remodeling project.



THE BUILDING IS FINISHED! Please join us for an Open House Saturday, February 23, 2008 4:00pm to 7:00pm

Back to web page comps



Logo variation # 4



## Logo comps: HiPER (High-Pressure Experimental Research)

During the creative process of developing a new Rice professor's research group's web site, the initially proposed name for the group was "HiPER". For this acronym, I was asked to create sample logos for the faculty member to review, and those comps are shown to the left. The professor - who is quite artistic himself - eventually chose a different name for the group ("EXPERT") and devised the final logo on his own.

## Portfolio – Web page Comps produced for Rice and other organizations



### Web Comps:

My preferred presentation for page design/layout comps has been to place thumbnail images in their own viewport and code the backend to display them in the main window whenever the customer/client selects them. I've found this to be an effective method when concurrently reviewing design ideas with a client located in a different location, as we can discuss by phone or videoconference what the end customer likes as far as specific design elements, color schemes, etc.. The following projects are displayed here:

- **HiPER Research Lab at Rice University** (later changed to ExPERT). Here different logos comps are combined with proposed layouts so that the professor could get a feel for what the overall look and feel might be.
- **Department of Earth Science home page** masthead logo designs.
- **Freelance project – Neurotherapy Center of Houston** site design comps. These are all original design layout ideas that I came up with as suggestions for a look and feel for this organization's web site centering around their provided logo.



## Portfolio – Rice’s Center for Technology in Teaching and Learning (CTTL) web sites



Landing splash page for [webadventures.rice.edu](http://webadventures.rice.edu) (2006-2007)



These versions of *The Reconstructors'* home pages utilized CSS rollovers featuring JavaScript-free image replacement for maximum page optimization and accessibility.



### CTTL grant-funded web adventures:

- ***The Reconstructors “A Plaguing Problem”***
- ***The Reconstructors “Nothing to Rave About”***
- ***Medical Mysteries***

From 2002-2007, I worked full-time in a research center focusing on how the use of technology - primarily Flash-based games - affected learning and knowledge retention with middle school-aged students. This was a position that I was particularly well suited for given my background in teaching and application of technology. I served not only as the web server administrator but also as the Webmaster of all of the project sites, as well as providing a good portion of the back-end Flash programming and animations.

- *Personal involvement: Design: 50%; Programming: 50%; Markup: 100%*
- *Standards compliance: xhtml 1.0*
- *Tools used: xhtml 1.0, CSS, Adobe Flash, Adobe Dreamweaver, Adobe Fireworks, Adobe Photoshop, Adobe Illustrator, Adobe Pagemaker, Adobe Acrobat Professional*
- *Total pages:*
  - *74 (+ many media files) Recon “Plaguing Problem”*
  - *50 (+ many media files) Recon “Nothing to Rave About”*
  - *67 (+ many media files) MedMyst*
- *Current status: Archived (shown versions of sites)*



## Portfolio – Rice Center for Technology in Teaching and Learning (CTTL) projects



### CTTL museum-commissioned kiosk projects:

- **Children’s Museum of Houston – “The Matter Factory”**
- **Centers for Disease Control (Atlanta, GA) – “PulseNet USA”**

On occasion, the team at Rice’s CTTL was commissioned by outside organizations to produce interactive educational content to enhance exhibit themes aimed at an adolescent demographic.

- *Personal involvement: Programming: 40%; Media Administration: 100%*
- *Standards compliance: NA (Flash-based)*
- *Tools used: Adobe Flash, Adobe Fireworks, Adobe Photoshop, Adobe Illustrator*
- *Exhibit specifics:*
  - *CMH’s “The Matter Factory” – This was installed on a museum PC that was incorporated into the display and utilized a mouse for interfacing. I was responsible for the management of all media files and performed initial setup on location at the museum.*
  - *CDC’s “PulseNet USA” – This project was developed for a touchscreen interface device as part of an interpretive display about DNA fingerprinting of food-borne pathogens. The display was installed at the Centers for Disease Control’s Visitor Center in Atlanta, GA. I was responsible for all media file management and acted as the technical liaison for installation at the remote site.*
- *Current status: unknown*

